

CONCRETE FINISHES



- Rock Salt Finish w/ integral color



- Exposed Aggregate / salt & pepper aggregate



- Granite Texture Stamp w/ smooth trowel banding



- Ashlar Slade Stamp Banding w/ smooth trowel interior



- Ashlar Slade Stamp Interior



- Granite Texture Stamp w/ 2' x 2' joints

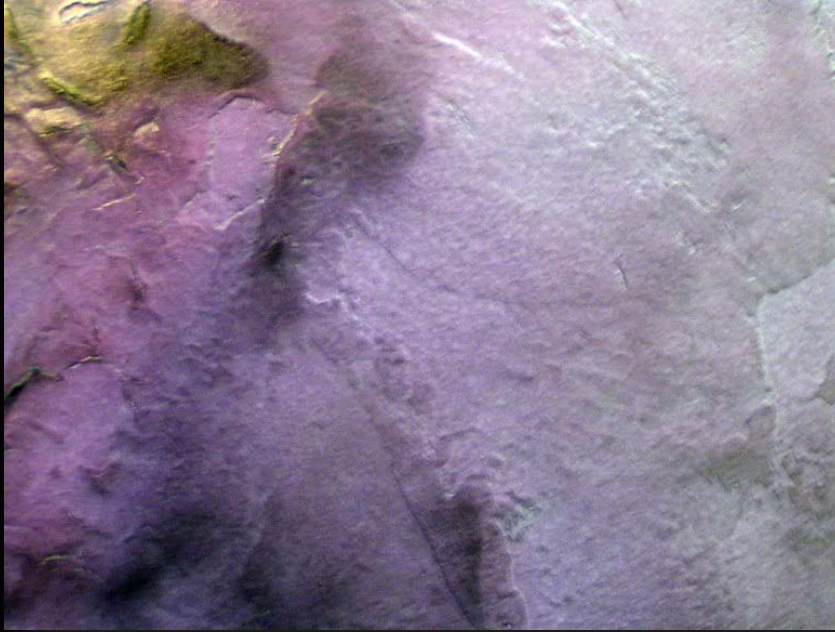


- Roman Slate Texture Stamp



- Roman Slate Texture Stamp w/ smooth trowel banding

CONCRETE STAINING



- Pearlescence-1 Stain



- Pearlescence-2 Stain



- Pearlescence-2 Stain